

MediaMate

Subtitle Encoding, Caption Extraction, File Manipulation, Format Conversion

- Set & Forget Configuration
- Automated Operation
- Efficient Handling of Large Media Files
- Easy to Upgrade
- Dalet Plug-in Integration Option
- Command Line Interface
- Optional REST API

MediaMate

- | | | |
|---|---|---|
| Graphics Encoding | → | Open Subtitles
DVB Subtitles |
| VBI/VANC Data
Insertion & Extraction | → | Teletext/OP47/SCTE-27 Subtitles
EIA608/708 Closed Captions |
| Image Script Interface | → | NLE Systems
Blu-Ray / DVD Authoring
Digital Cinema (Cinecanvas)
Transcoder Systems (Dalet) |
| File Manipulation | → | EDL/Retiming
Frame Rate Changes
Format Conversion |

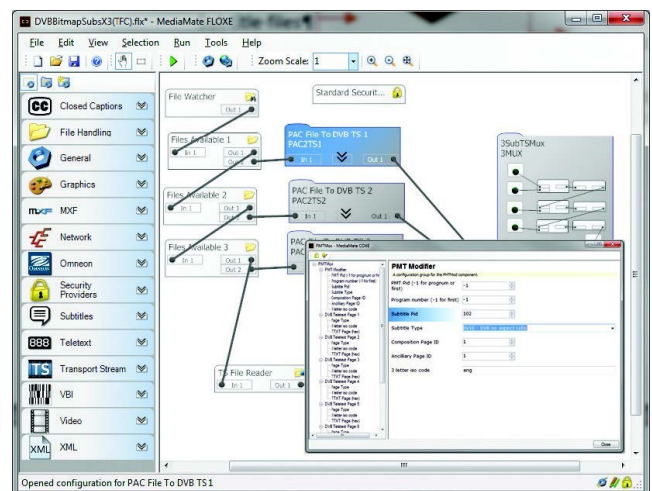
Broadcasters, VOD operators, subtitling and post-production facilities can streamline subtitling workflows using MediaMate:

- Reduce turnaround times
- Enable efficient delivery for more platforms
- Enhanced flexibility to service changing client demands.

MediaMate can be used as a standalone software solution using watch folders or as part of an automated workflow using a command line interface or the optional REST API.

MediaMate also supports new workflows using the latest media file formats and subtitle delivery formats.

MediaMate enhances the market-leading Polistream system for linear subtitle insertion processes, extending those capabilities and more into the file-based domain.



MediaMate is a flexible solution in which individual software components are combined to create an end-to-end workflow model.

Contact Us US: +1 404-327-8300 | International: +44 1473 831700 | sales@broadstream.com | <https://broadstream.com>

MediaMate File-Based Workflows

MediaMate Single Insert	<p>Encodes “closed” subtitles into various media file types (one stream/language per job):</p> <ul style="list-style-type: none"> • MXF as SMPTE436M datatrack (teletext/OP47 subtitles or EIA608/708 closed captions in VBI/VANC) • MPEG-2 I-frame only tall SD video (w/without MXF wrapper) as teletext subtitles or EIA608 closed captions in VBI • DVB Transport Stream file as SCTE-27, DVB teletext or bitmap subtitles
MediaMate Multi Insert	As MediaMate Single Insert (above) plus the ability to handle up to 5 streams/languages per job.
MediaMate Open Subtitle Encoder	<p>Creates open subtitles either directly into the media file or via a 3rd party compositor:</p> <ul style="list-style-type: none"> • MPEG encoding: burns open subtitles into video picture in MPEG-2 I-frame only (PS/ES with/without MXF or MOV wrapper) • Script + Image: creates high-quality PNG graphic with alpha channel (inc SD, HD, 2k and 4k) plus text/XML script for various 2D & 3D formats (including Cinecanvas and Blu-ray authoring), Screen OTT subtitling and 3rd party compositor systems (including Vantage, Dalet, Rhozet and Final Cut Pro) • WebText: also includes WebText output formats given below
MediaMate WebText Subtitling	Converts standard subtitle file to PAC/STL and various text/XML formats including those typically used for subtitling of Internet media (e.g. TTML, SMPTE-TT, FF, NetflixTT, ITT, Web-VTT, SMIL, Cinecanvas XML, EBU-TT and SRT).
MediaMate File Converter	Converts subtitle files to PAC, STL, SRT OR EBU-TT
MediaMate Retiming	<p>Frame rate conversion</p> <p>EDL to remove and/or retime subtitles</p> <p>PAC to/from SCC conversion</p>
MediaMate Screener	Create preview WMV from media files and corresponding subtitle files
MediaMate Subtitle Analysis	Checks incoming subtitle files for a range of errors and inconsistencies before either passing or rejecting the files with an error report. Tests can be configured for a range of parameters including timing, consistency and header information. XML output as standard; custom workflows may include email notification and/or XLST to your XML format.
MediaMate Audio Accessibility Engine	<p>Creates a “broadcaster mixed” audio description track with dipped program sound during narrations from a standard audio description WAV file (descriptive audio on the left stereo channel and a control/warble track for pan and fade on the right channel) and associated broadcast program audio; all audio files 16 bit, 48 kHz stereo WAV.</p> <p>Generates audio WAV file (16 bit, 48 kHz stereo) using text to speech technology (via standard Microsoft Speech API), for Spoken Subtitles or Audio Description (Text to Speech software not included).</p>
MediaMate Subtitle Extract	<p>Extracts subtitle data from a media file to create a PAC/STL/SCC subtitle file (single language per job):</p> <ul style="list-style-type: none"> • MXF with SMPTE436M datatrack or GXF with RIFF data (EIA608/708 closed captions, OP47 or teletext) • I-frame only MPEG-2 SD video with/without MXF wrapper (EIA608/teletext VBI) • DVB-TS file with DVB-teletext subtitles

Subtitle file input formats - PAC, STL, CHK, 890, SRT, SUB, OVR, TXT, XIF, CAP.

Closed captions - EIA608/708 functionality is currently subject to customer requirements.

Dalet Plug-In - Selected MediaMate functionality is also available in Dalet products, contact Dalet for more information.

Specifications are subject to change without notice. E&EO.

Contact Us US: +1 404-327-8300 | International: +44 1473 831700 | sales@broadstream.com | <https://broadstream.com>