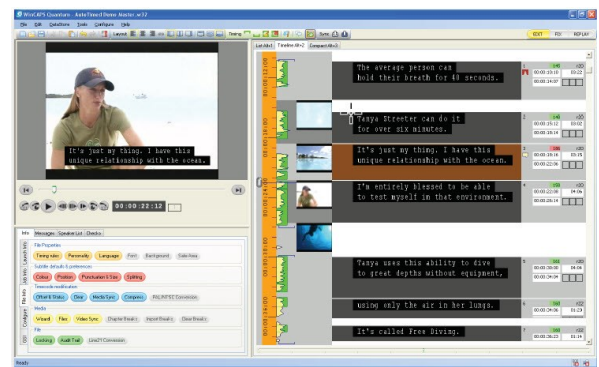


Comprehensive Standard Capabilities

WinCaps-Q4 provides all the functionality needed for professional subtitlers to create any form of subtitling or captioning in any language, with support for various subtitle preparation and workflows in a wide range of file formats.

Visit our Store for more information at www.subtitling.com/store.



WinCaps Q4—Standard

Popular with freelancers WinCaps Q4 Standard Edition is a fully-featured creation package for Windows PCs available as a single, subscription license. [Visit our Store for purchase information](http://www.subtitling.com/store).

WinCaps Q4—Pro

The Pro version adds an innovative text-to-speech aligner for automatic timing and enhanced support for re-speaking techniques, commonly used for live captioning to increase productivity. Available in multiple languages from our [Store](http://www.subtitling.com/store).

WinCaps Q4—Enterprise

Improved flexibility for corporate users and powerful productivity enhancing tools for creation of same language (hard-of-hearing) captions including:

Multi-User Network License

Concurrent user licensing allows licenses to be shared among a team, rather than restricted to use on a single computer.

Automatic Timing Alignment

Automatically assigns timecodes based on alignment of the subtitle text and the program audio.

Gain Significant Time Savings

A script can be easily converted to subtitles, aligned to the program audio and automatically colored according to speaker; or a trained live voice captioner can quickly create a reasonable subtitle file for fast turnaround programming.

Speech Recognition

An SDK interface for Dragon NaturallySpeaking® optimizes the use of respeaking for text entry, giving a significant speed improvement over conventional typing.

Script Extractor

Cleverly allows a user to identify useful dialogue and speaker indication in a couple of minutes.

WinCaps Q4 Subtitling Software

Standard Features	<ul style="list-style-type: none"> • Video/subtitle preview and subtitle list with synchronized playback with vertical timeline and compact QC views • Shot-change detection, audio level indication (waveform) and speech presence indication • Flexible timecode spotting (as-you-go and on-the-fly workflows) with automatic timing rules (including shot-change avoidance, minimum gap and duration/out-time calculation based on target reading rate) • Configurable client specific style templates, program specific vocabulary lists, shortforms for faster accurate typing, forced subtitles and chapter break rules for DVD • Comment space for each subtitle, side-by-side synchronized translation & view • Timecode offset/restripe, frame rate conversion, range style edits and resync, overwrite text only • Linguistic text splitting (default English language rules included) • Speaker indication and automatic coloring • Comprehensive style/timing checks, timecode re-sync post video cut, global/range edit, re-sort subtitles by timecode, multi-level file locking
Production Formats	Open caption (suitable for TV, DVD, DVB and web), Teletext, Line 21 Closed Caption EIA 608; SD-25fps PAL, 29.97* fps NTSC (*drop frame and non-drop frame); HD—1024x720, 1920x1080; 24, 23.976/23.98, 25, 29.97*, 50 & 59.94* fps (interlaced, progressive & psf).
Browse/Proxy Media	MP4, MPEG4, MOV, MPEG1, WMV and AVI digital video files at recommended resolution of 352x288/240 (higher resolution subject to PC performance) with audio track selection for media files containing multi-track audio; also WAV & MP3 audio files (some media format require use of QuickTime or the included MediaLooks MultiFormat filter, which may also support other formats such as MXF).
Video Control	Digital: Standard numeric keypad, full keyboard or USB number pad or vPedal foot pedal or Contour Shuttle Pro Controller. Analog: VIVO graphics card or DeckLink SDI and Plura timecode card.
Subtitle File Formats	General: W32**, PAC, FPC, SRT, WebVTT, EBU-TT, RTF, TXT (with and without timecodes), Microsoft Synchronized Accessible Media Interchange (SAMI/.SMI) Open/Teletext: STL (EBU Tech 3264-E), 890 (Cavena/ScanTitling) Open Caption: TTML=DFXP (W3C timed-text XML), Digital Cinema XML (DLP/CineCanvas, DTS) Final Cut Pro (XML+TIFFs), DVD Studio Pro (STL), Adobe Premiere Pro (EDL+PNG), Ultech USF (DV/HDE-3000) Closed Caption: Cheetah CAP(SD), CIN, MCA, ULT(Ultech) DVD Closed Caption: SCC (Daiken/Spruce Maestro and Sonic Scenarist, CC(Sonic)
Languages & Fonts	All Unicode languages using standard Windows TrueType fonts. Spell checking is handled by MS Office Proofing Tools (not included) Teletext subtitles and Closed Captions are subject to associated character/language constraints
Minimum PC Specs	Windows 10, 8.1 or 7; Intel Core i5 CPU (3.2 GHz), 4GB RAM (6GB if using speech recognition); graphics card with at least 512MB RAM (NVidia GeForce or AMD Radeon); full keyboard with numeric pad (or use with USB numeric pad); Microsoft Word must be installed on the PC for spell checking (permanent or 365 subscription, not browser based Office 365, Office Online, Starter, or On-Demand)
Licensing	Online monthly or annual subscription (order, pay, download and activate in moments), locked to registered PC

WinCaps Q4 Enterprise Edition—As above plus the following:

Script Processing	Identify and extract dialogue, speaker cues and timing in almost any script layout that can be read in Microsoft Word (must also be installed on PC)
Automatic Text-to-Speech Alignment	Automatic timecoding based on matching subtitles to audio (same language captions: Dutch, English, Finnish, French, German, Italian, Spanish and Swedish)
Speech Recognition	Optimized respeaking workflows via integrated SDK & UI for Dragon NaturallySpeaking® speech recognition system (not included)
DVD & Blu-Ray	Control data files: User configurable Unicode/ANSI text/XML including fields for file, job, subtitle and image properties plus derived expressions/calculations. Easily customized sample templates are provided for various DVD and Blu-ray Disk authoring systems (such as Panasonic, Sonic Solutions, Sony and Spruce Maestro).
Video Output	Screener utility: generates low-resolution video with burnt-in subtitles for client approval (output WMV, proxy video source must be WMV, Mpeg-1 or AVI)
Options	Network Datastore (for easy access to customer templates and other shared resources), network Video Indexer (saves time by pre-processing media files prior to use in Wincaps)
Licensing	Multi-user network license with online subscription or permanent license (priced per concurrent user)